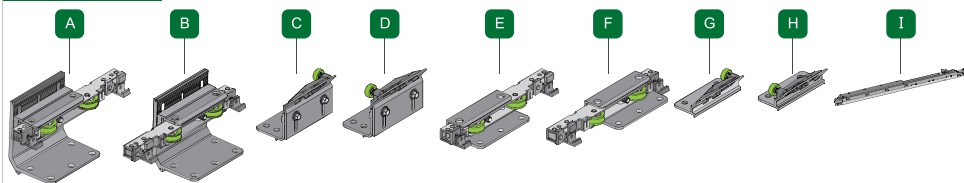
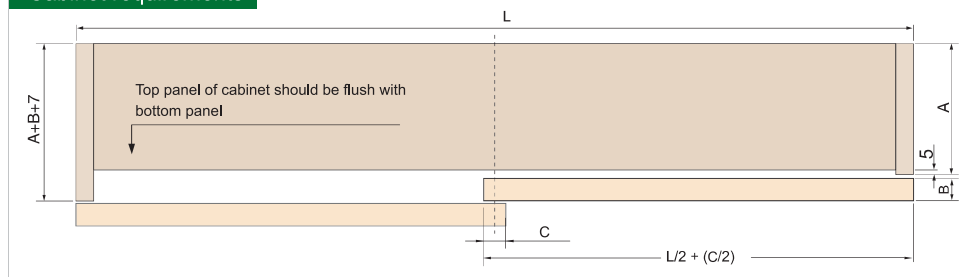


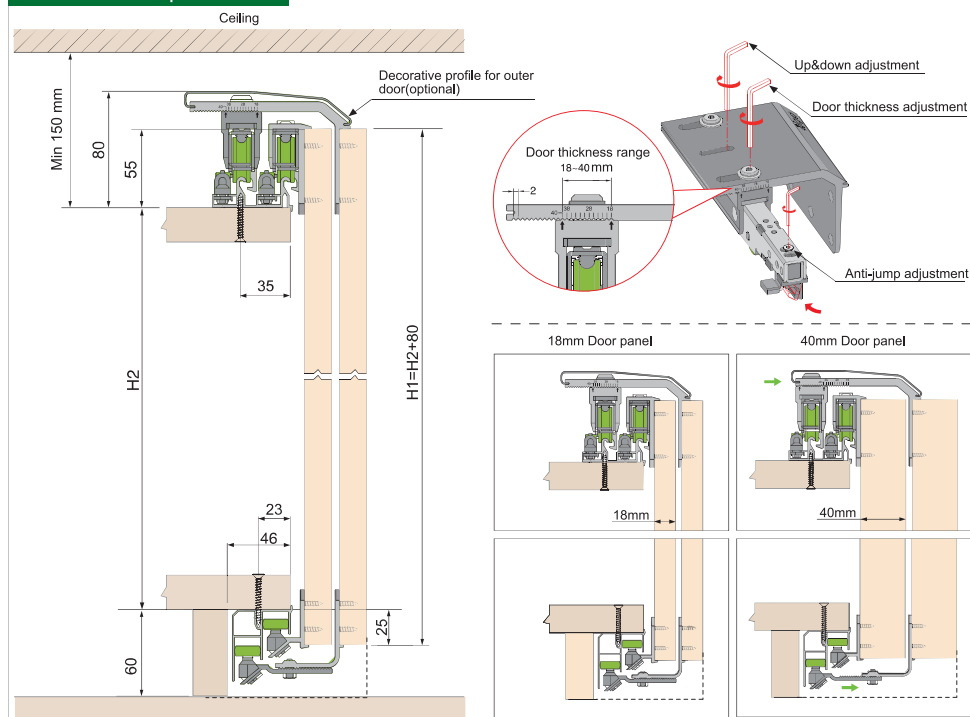
## Accessories



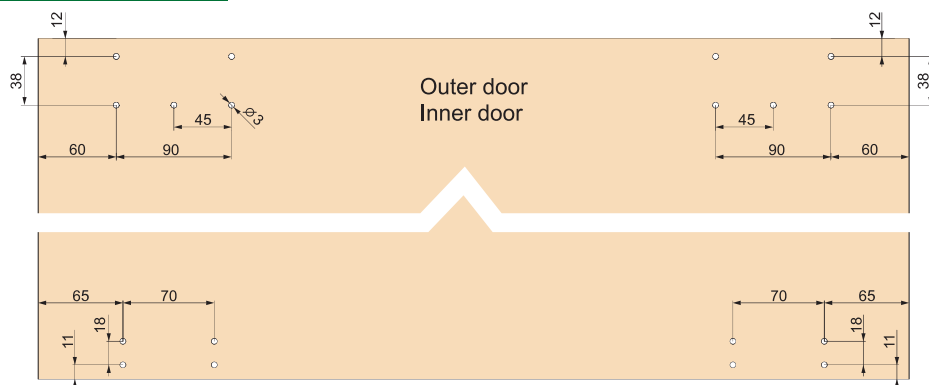
## Cabinet requirements



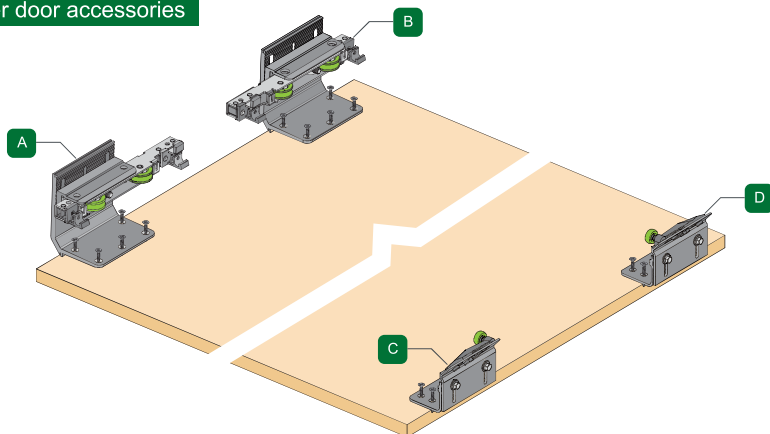
## Installation requirements



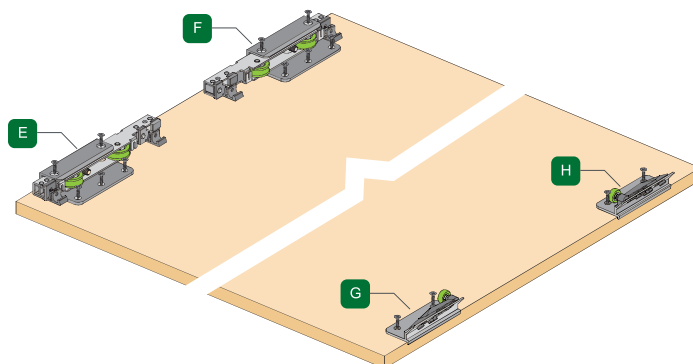
## Installation dimensions



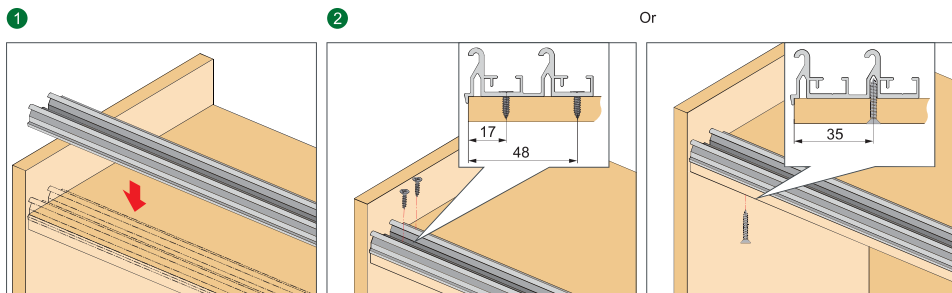
## Install outer door accessories



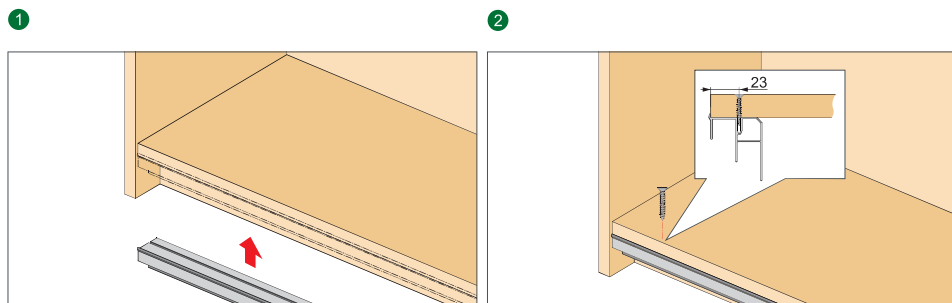
## Install inner door accessories



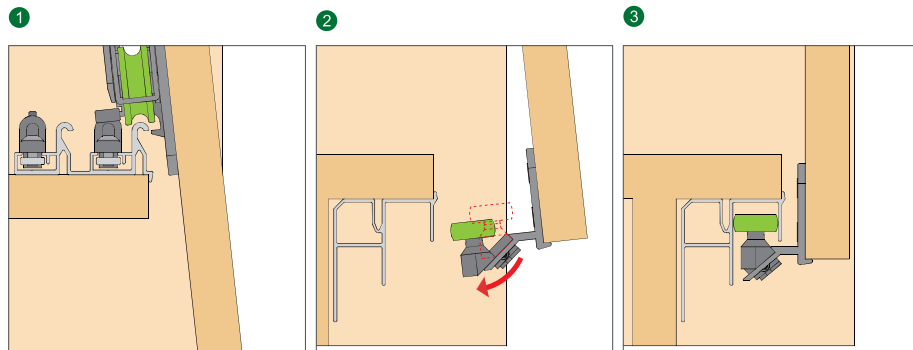
## Install top track



## Install bottom track

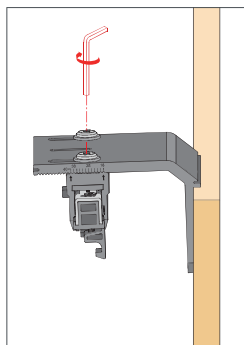


## Install inner door



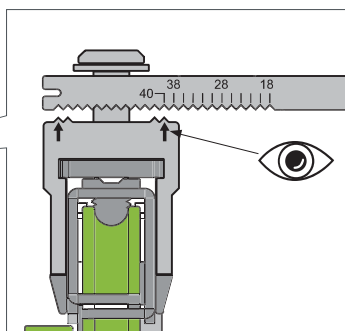
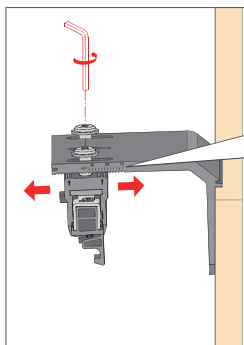
## Install outer door

### 1 Loosing top running part

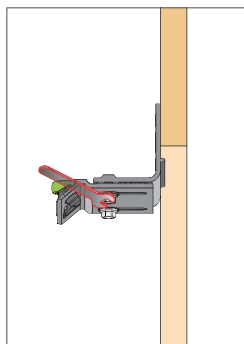


### 2 Adjustment according to door thickness

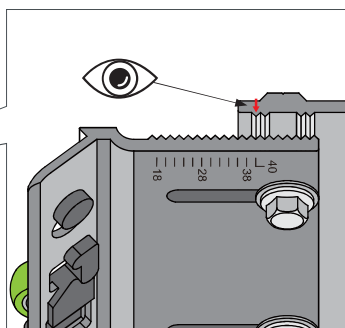
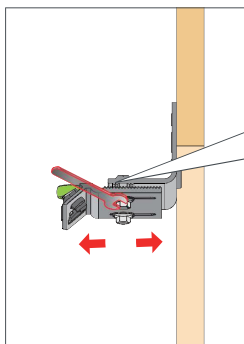
Door thickness: 40mm



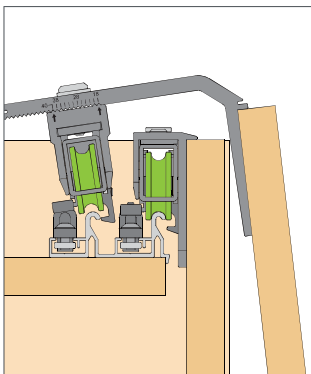
### 3 Loosing bottom guiding part



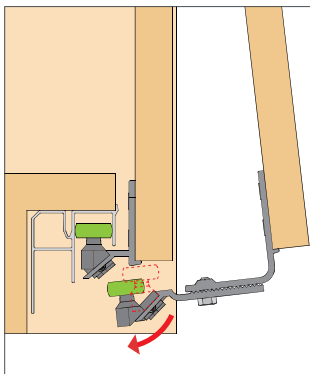
### 4 Adjustment according to door thickness



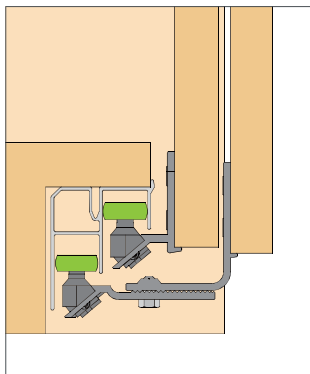
### 5



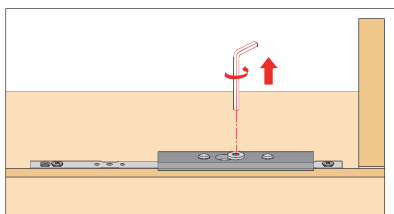
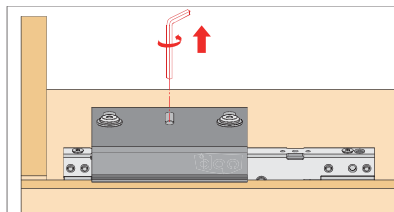
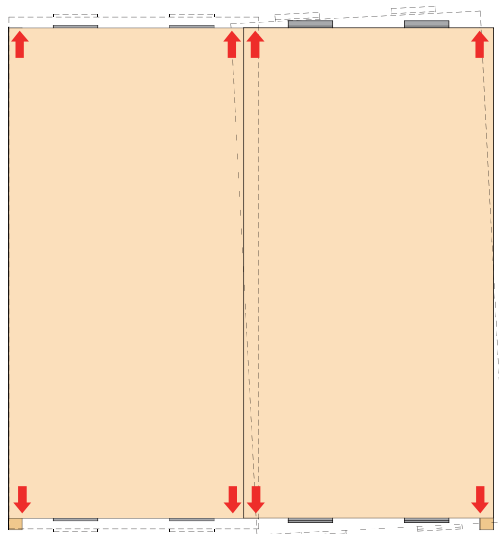
### 6



### 7

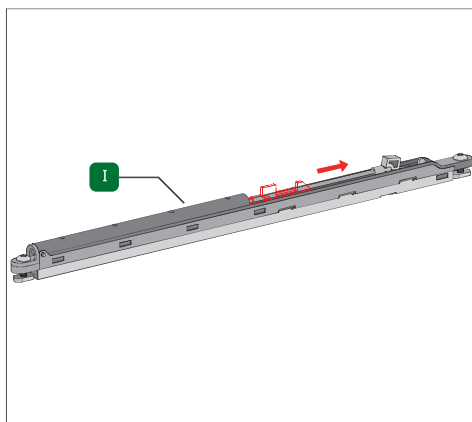


## Door height adjustment

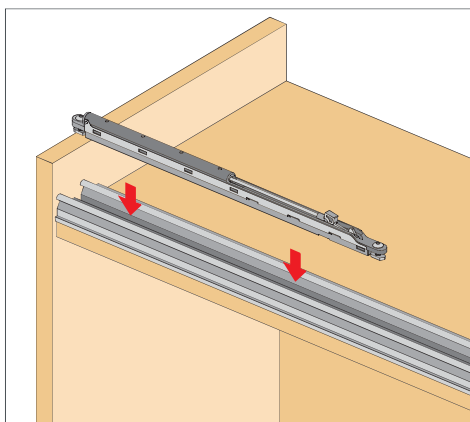


## Install damper

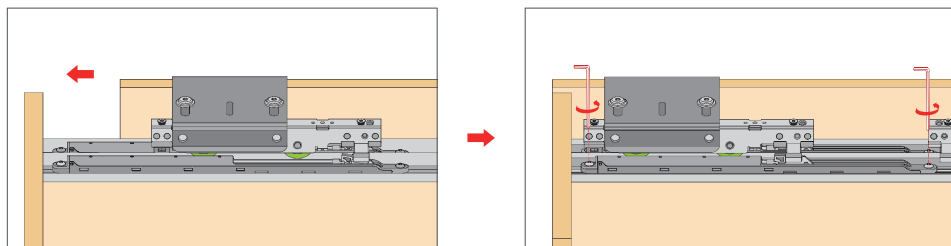
1 Open the damper hook



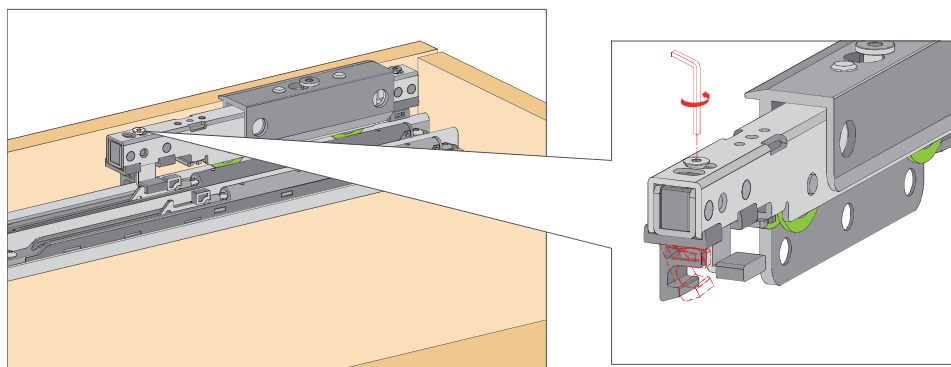
2



## Position the damper



## Anti-jump hook adjustment



## Install decorative cover for outer door (optional)

